

RMS-2000

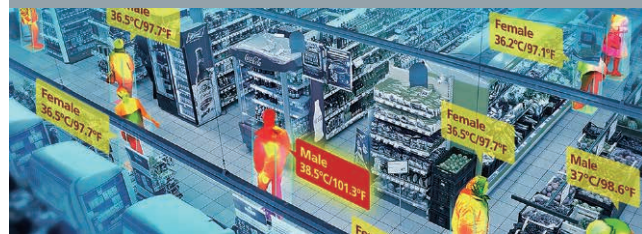
9th Generation Intel® Xeon®/Core™ i7/i5/i3 Processor (Coffee Lake)
Expandable 2U 8 Bay Rackmount System

- 9th Generation Intel® Xeon®/Core™ i7/i5/i3 Processor (Coffee Lake) with workstation-grade Intel® C246 Chipset
- 2 DDR4 2666MHz Memory, up to 128GB (ECC/Non-ECC)
- 1 VGA, 1 HDMI, and 1 DisplayPort display interfaces support triple independent HD displays, up to 4K resolution
- 4 Independent GigE LAN, iAMT 12.0 supported
- 8 Front-access 3.5" HDD trays, RAID 0, 1, 5, 10 data protection
- 4 10G USB 3.1, 2 USB 2.0, 1 COM RS-232/422/485
- 115V to 230V AC Power Input (600W)

Data Center



AI Surveillance



Traffic Vision



Factory Automation



intel
partner
Gold
IoT Solutions



Specifications

System

Processor	8 Cores Intel® Xeon® /Core™ i7/i5/i3 Processor (CFL-R S/CFL-S)
Chipset	Intel® C246
BIOS	AMI
SIO	IT8786E
Memory	4 DDR4 2666MHz UDIMM, up to 128GB (ECC/Non-ECC)
OS	Windows 10, Linux

I/O Interface

Serial	1 COM RS-232/422/485
USB	4 USB 3.1 Gen2
GigE LAN	4 GigE LAN, 10/100/1000 Base-T RJ45
LED	Power, HDD

Expansion

M.2	1 M.2 2280 Key M Socket (2280, PCIe x4 Bus)
-----	---

Graphics

Graphics Processor	Intel® UHD Graphics 630
Interface	Triple independent displays : - 1 VGA : Up to 1920 x 1200 @60Hz - 1 HDMI : Up to 1920 x 1200 @60Hz - 1 DisplayPort : Up to 4096 x 2304 @60Hz

Storage

SATA	8 SATA III (6Gbps) support S/W RAID 0, 1, 5, 10
Storage Device	8 Front-access 3.5" HDD Tray

Audio

Audio Codec	Realtek ALC888S-VD, 7.1 Channel HD Audio
Audio Interface	1 Mic-in, 1 Line-out

Ethernet

LAN 1	Intel® I219LM GigE LAN supports iAMT 12.0
LAN 2	Intel® I210 GigE LAN
LAN 3	Intel® I210 GigE LAN
LAN 4	Intel® I210 GigE LAN

Power

Power Input	115V to 230V, AC-in (600W)
Power Interface	3 Square Pin Plug

Others

TPM	Optional Infineon SLB9665 supports TPM 2.0, LPC Interface
Watchdog Timer	Reset : 1 to 255 sec./min. per step
Smart Mgmt.	Wake on LAN, PXE supported

Mechanical

Dimensions	437.0mm x 533.4mm x 88.9mm (17.20" x 20.98" x 3.50")
Weight	20 kg (44.10lb)
Mounting	Rackmount

Environment

Operating Temp.	0°C to 40°C (32°F to 104°F)
Storage Temp.	-20°C to 75°C (-4°F to 167°F)
Humidity	5% to 95% Humidity, non-condensing
Relative Humidity	95% @ 40°C
Shock	- IEC 60068-2-27, IEC 61373 - SSD : 10G, Half-sine, 11ms
Vibration	- IEC 60068-2-64, IEC 61373 - SSD : 1.5Grms, 5Hz to 500Hz, 3 Axis
EMC	CE, FCC

* The rights of all brand names, product names and trademarks belong to their respective owners.
Copyright © 2023 Vecow Co., Ltd. All rights reserved.

Order Information

Model	Power Module	GigE LAN	SSD Tray	PCIe x16	PCIe x4	COM	10G USB
RMS-2000	115V to 230V, AC-in	4	8	1	2	1	4

Accessories

DDR4 32G	Certified DDR4 32GB 2666MHz RAM
DDR4 16G	Certified DDR4 16GB 2666MHz RAM
DDR4 8G	Certified DDR4 8GB 2666MHz RAM
DDR4 4G	Certified DDR4 4GB 2666MHz RAM
2U CPU Cooler	CPU Cooler for 2U Chassis
2U Slide Rail	19" to 26.6" Ball-Bearing, Toolless

Dimensions & Drawing

Unit : mm (inch)

